

## Geographic Information Systems (GIS)

A geographic information system (GIS) integrates hardware, software, and data for capturing, managing, analyzing, and displaying all forms of geographically referenced information. GIS allows users to view, understand, question, interpret, and visualize data in many ways that reveal relationships and patterns in form of maps, reports, and charts.

Consistent with its long standing commitment towards providing public access to GIS technology, tools, and data, Westchester County GIS is now making its map services available to the public. Follow the step-by-step instructions in this document to view and analyze GIS datasets being published by Westchester County GIS with free software available from Environmental Systems Research Institute (ESRI).

### Instructions

#### Getting Started

Four basic steps are required to configure a personal computer (PC) for a user to start using GIS in Spanish. These steps are:

1. System (PC) Check: This step helps determine whether or not your personal computer has the minimal components (RAM, video card, processor, etc) to run the GIS software
2. Download/install ArcGIS Explorer software: Get a free copy of ArcGIS Explorer (Spanish client) from [www.esri.com](http://www.esri.com).
3. Adding GIS Data: How to add GIS datasets via a *map service* from the Westchester County GIS website
4. Using the GIS software: This step includes a couple simple instructions and samples on how to get started with the software.

### 1. PC check for ArcGIS Explorer

- A. View the System and Software Requirements at <http://resources.arcgis.com/content/arcgis-explorer/1750/system-requirements>
- B. Run the **Can you Run It** Software
  - 1) Go to <http://cyri.systemrequirementslab.com/1186/10913>
  - 2) Click the **Can You Run It** button

Click "Can you run it?" and System Requirements Lab will provide a quick analysis - easy, fast and free.

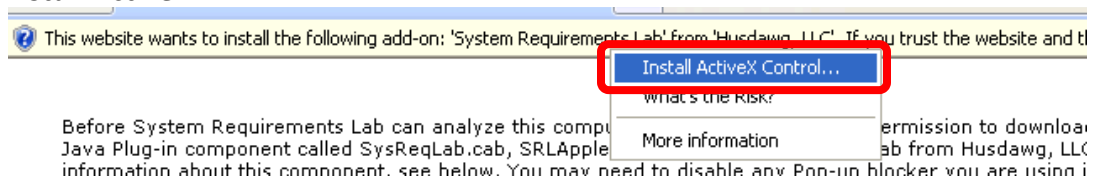
 CAN YOU RUN IT?

- 3) If this box pops up, click close

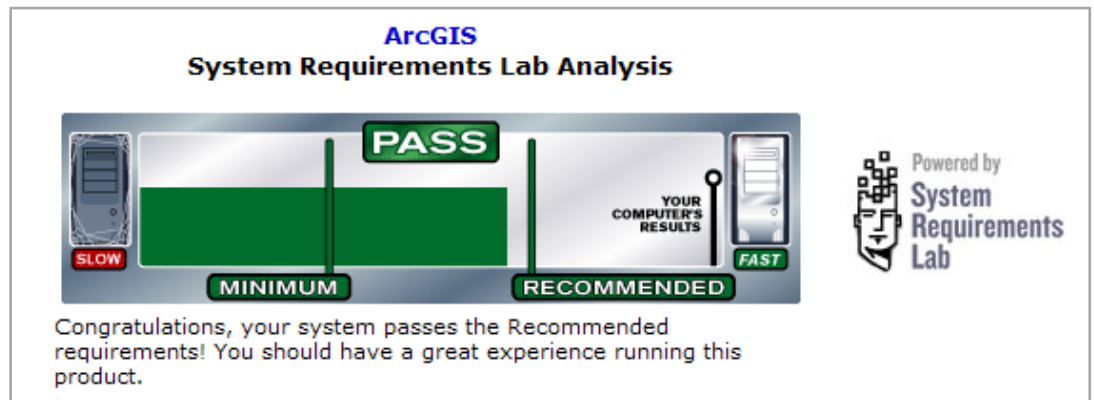


- 4) If asked to Install plug in, please do so.

- a) In Internet Explorer, right click on the yellow bar on top of the page and select **Install Active X.**



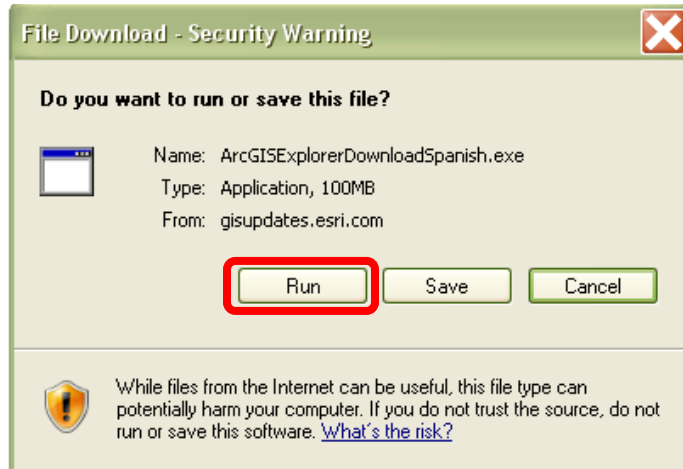
- b) Results should display shortly indicating how the PC system stacks up against ArcGIS Explorer's system requirements. Hopefully it will look something like this.



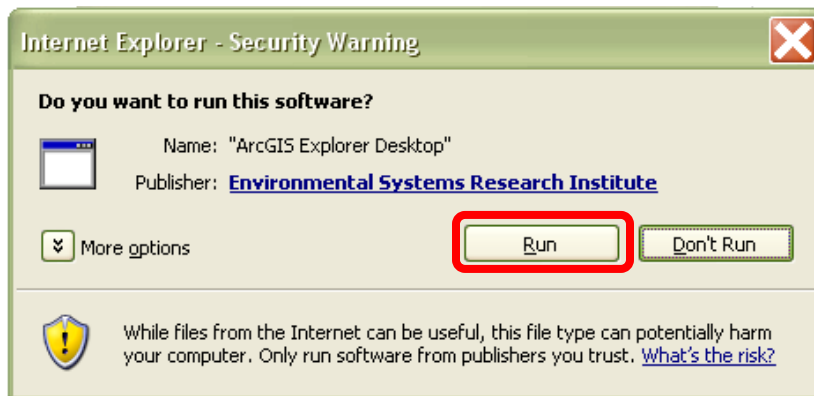
## 2. Download ArcGIS Explorer

- A. Go to <http://www.esri.com/software/arcgis/explorer/download.html>.
- B. Install [Microsoft .NET Framework 3.5 Service Pack 1](#) (if you don't have it)
- C. Download ArcGIS Explorer
  - 1) Download [Versión Española](#)

- 2) In the **File Download** Box, select **Run**



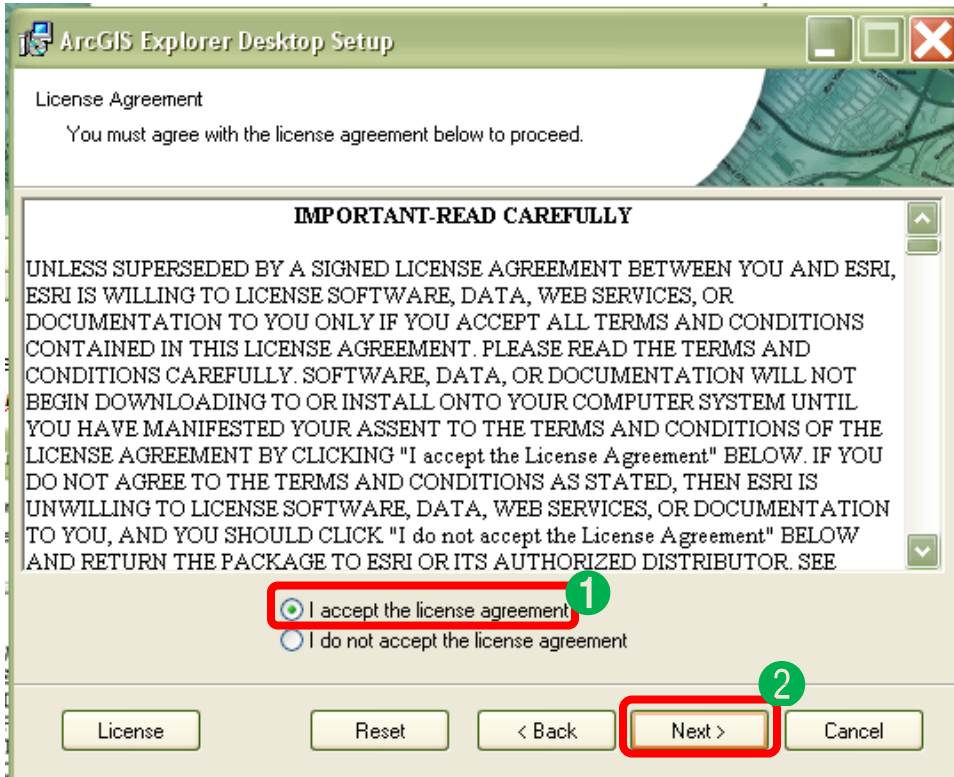
- 3) When the file is finished downloading, another window will appear. Select **Run**.



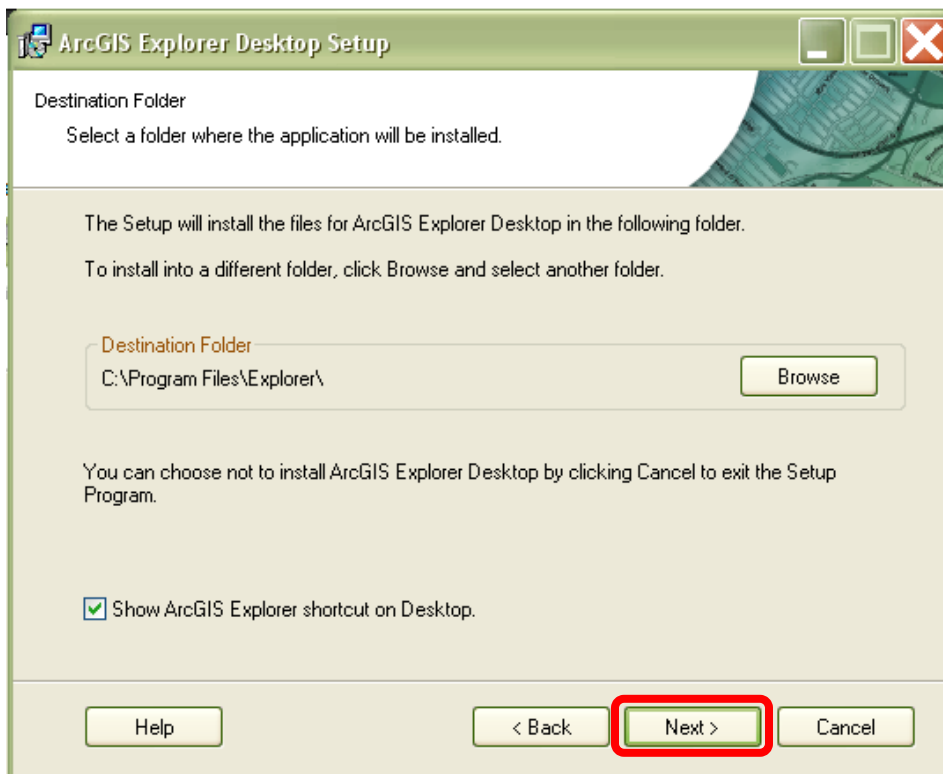
- 4) In the **ArcGIS Explorer Desktop Setup** box, select **Next**.



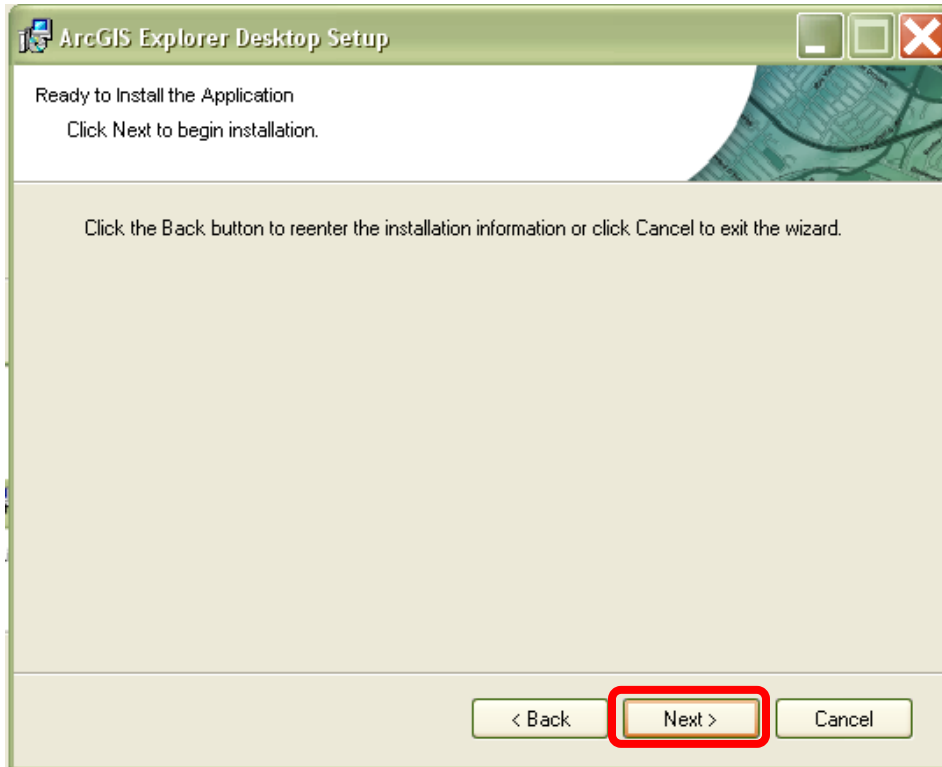
- 5) On the **License Agreement** page, select **I accept the license agreement** and then select **Next**.



- 6) Select **Next**.



7) Select **Next**.



8) Select **Finish**.

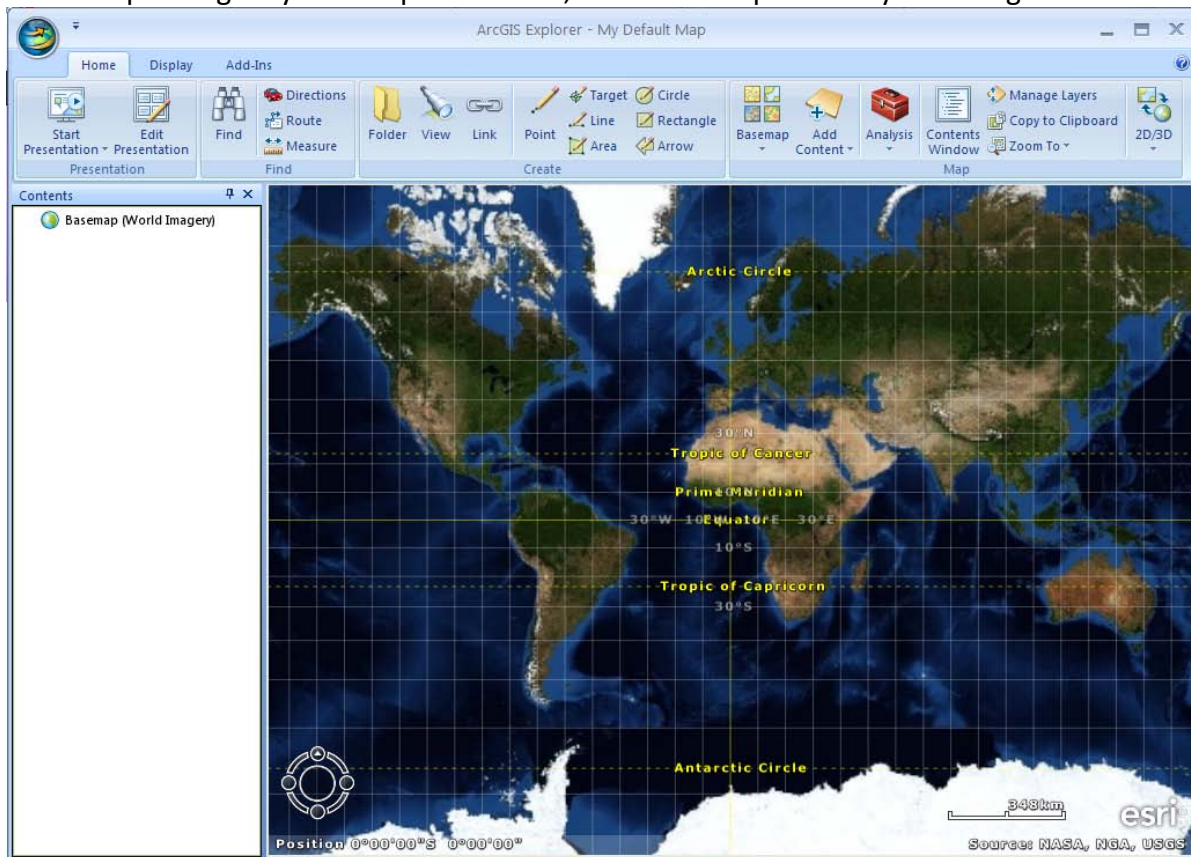


### 3. Adding GIS Data

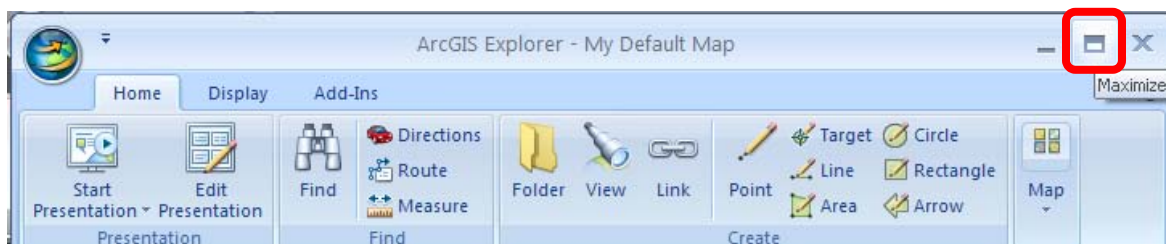
#### A. Open ArcGIS Explorer

Go to **Start > Programs > ArcGIS Explorer Desktop > ArcGIS Explorer Desktop**

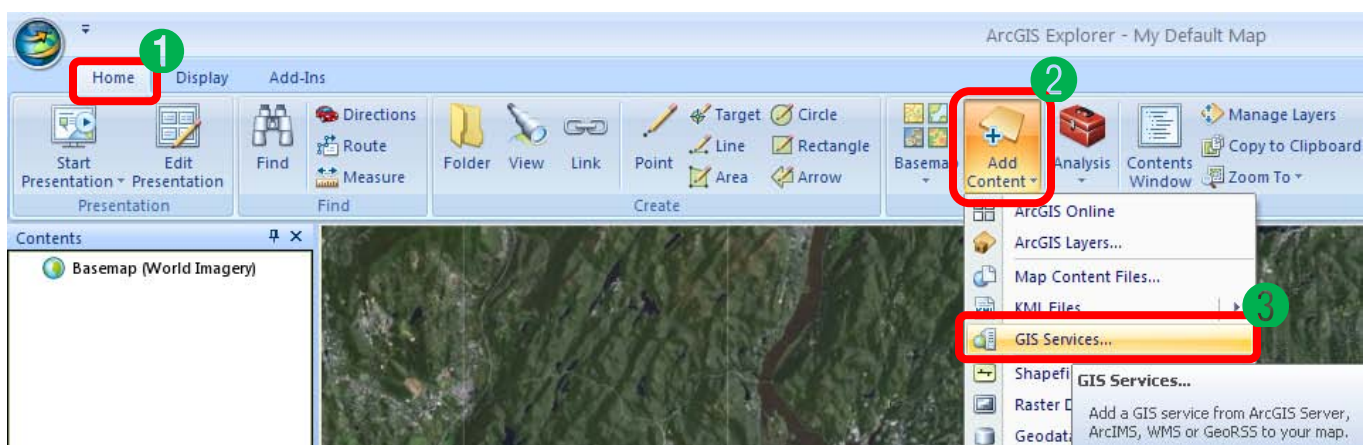
Note: Depending on your PC specifications, the ArcGIS Explorer may take longer to load than others.



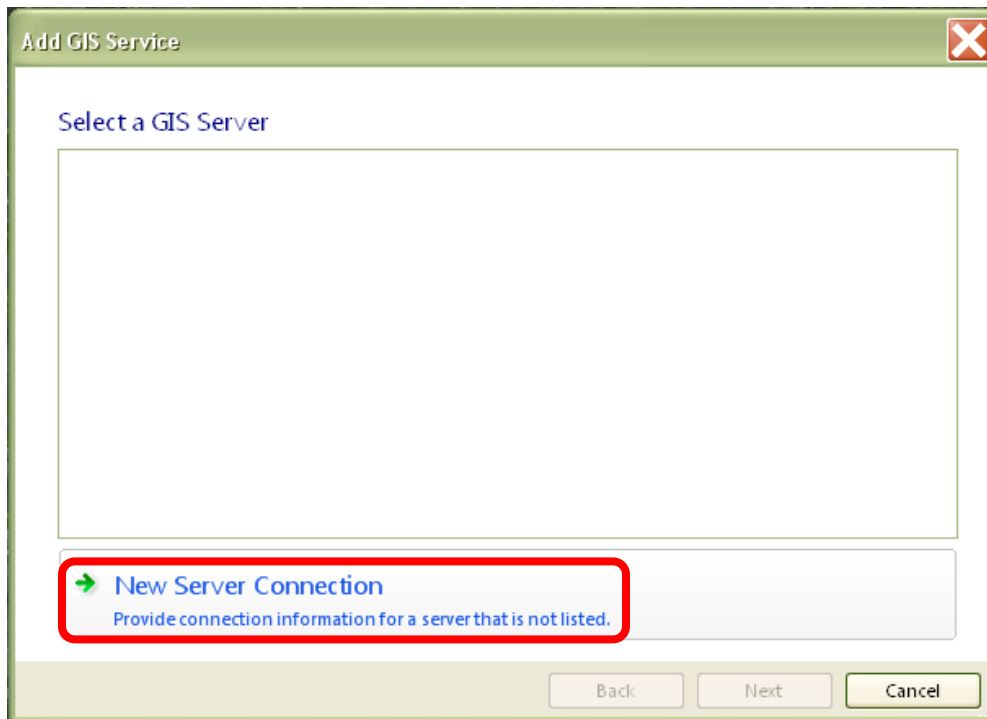
#### B. Maximize ArcGIS Explorer.



#### C. On the **Home tab**, select the **Add Content** button then select **GIS Services...**



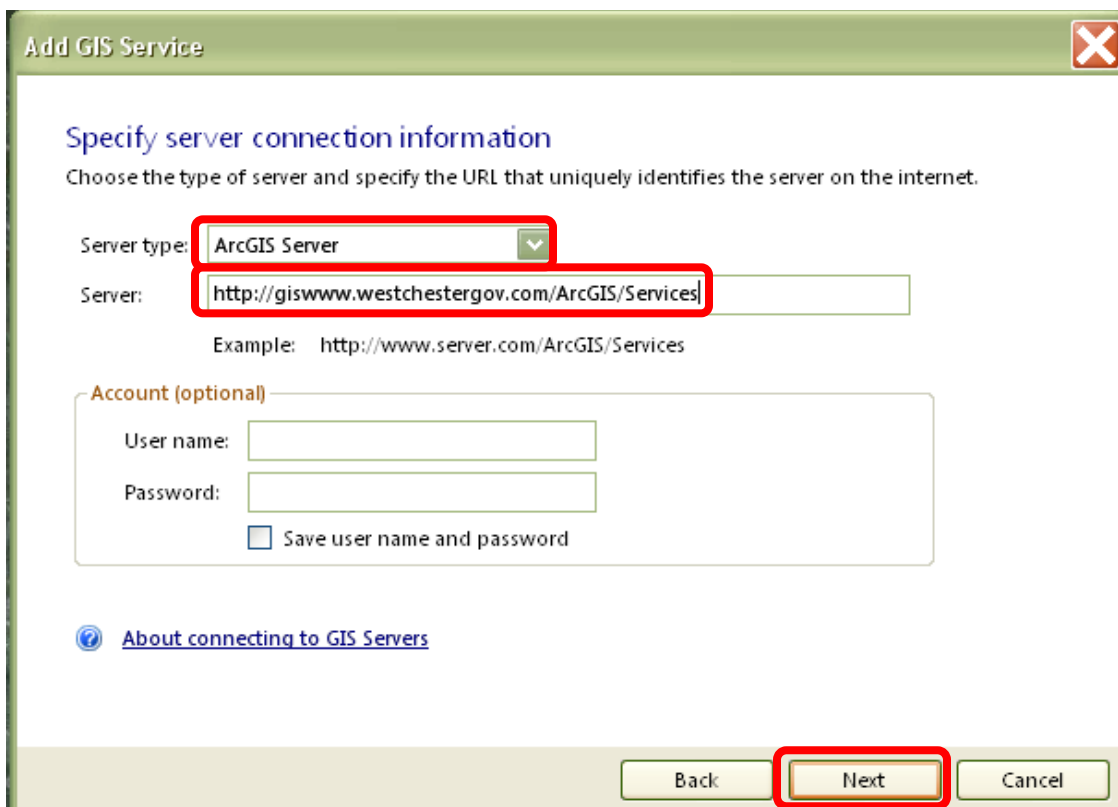
D. In the **Add GIS Service** window. Select the **New Server Connection** button.



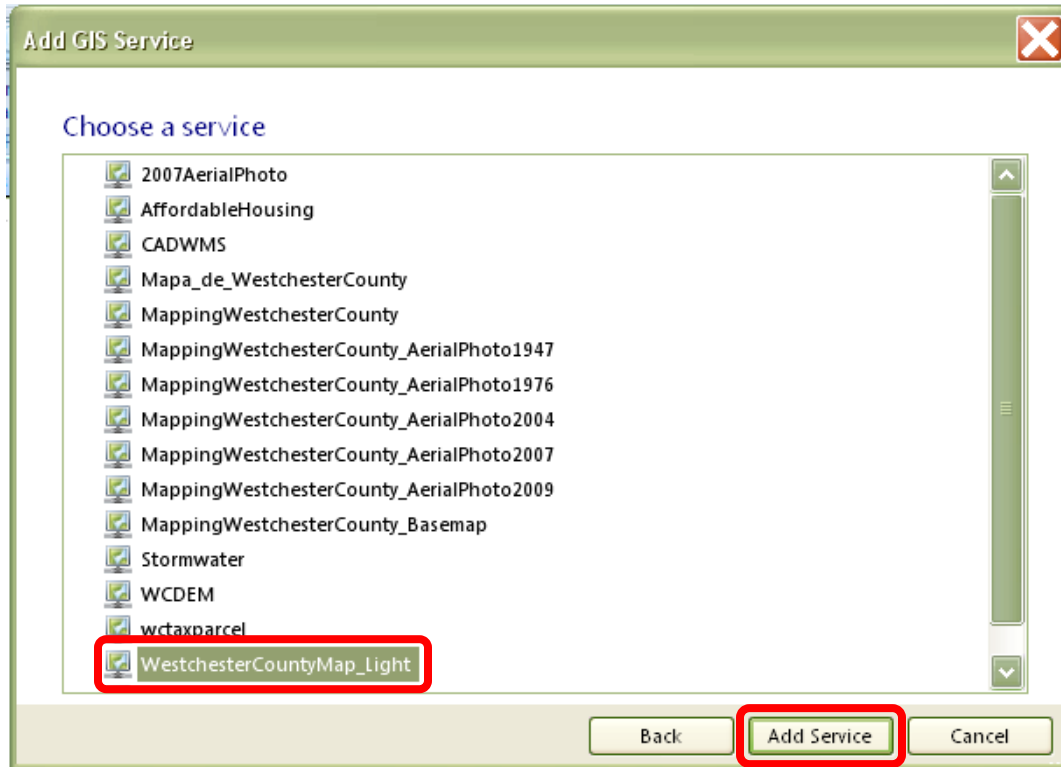
E. For **Server type**, select **ArcGIS Server**

F. For **Server**, enter ***http://giswww.westchestergov.com/ArcGIS/Services***

G. Select **Next**



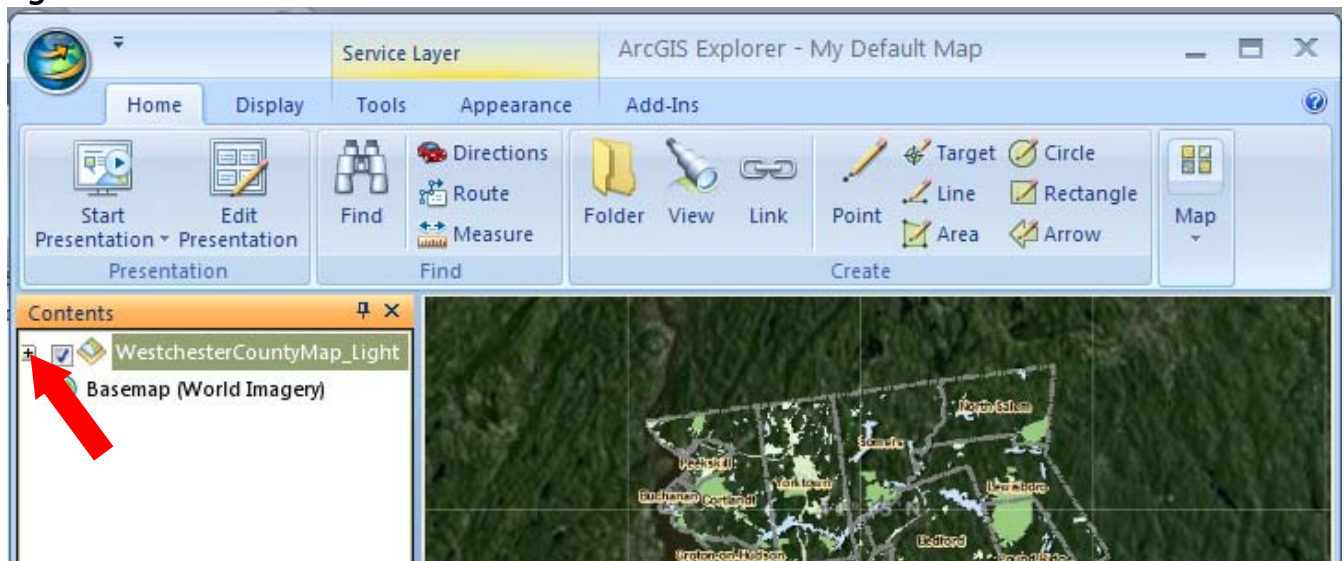
H. Under **Choose a service**, select *WestchesterCountyMap\_Light* and then select **Add Service**.



#### 4. Using the ArcGIS Explorer software:

A. View the Layer List

In the **Contents** panel, click on the plus sign next to *MappingWestchesterCounty\_Light*.

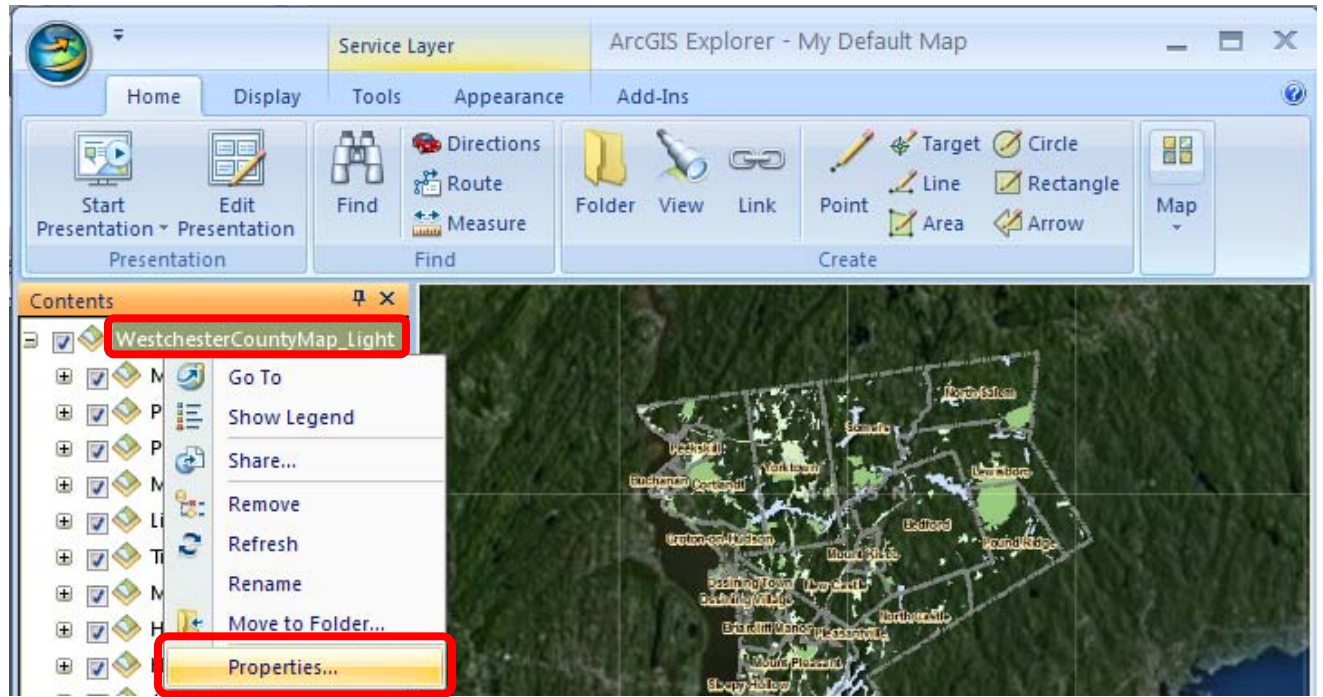




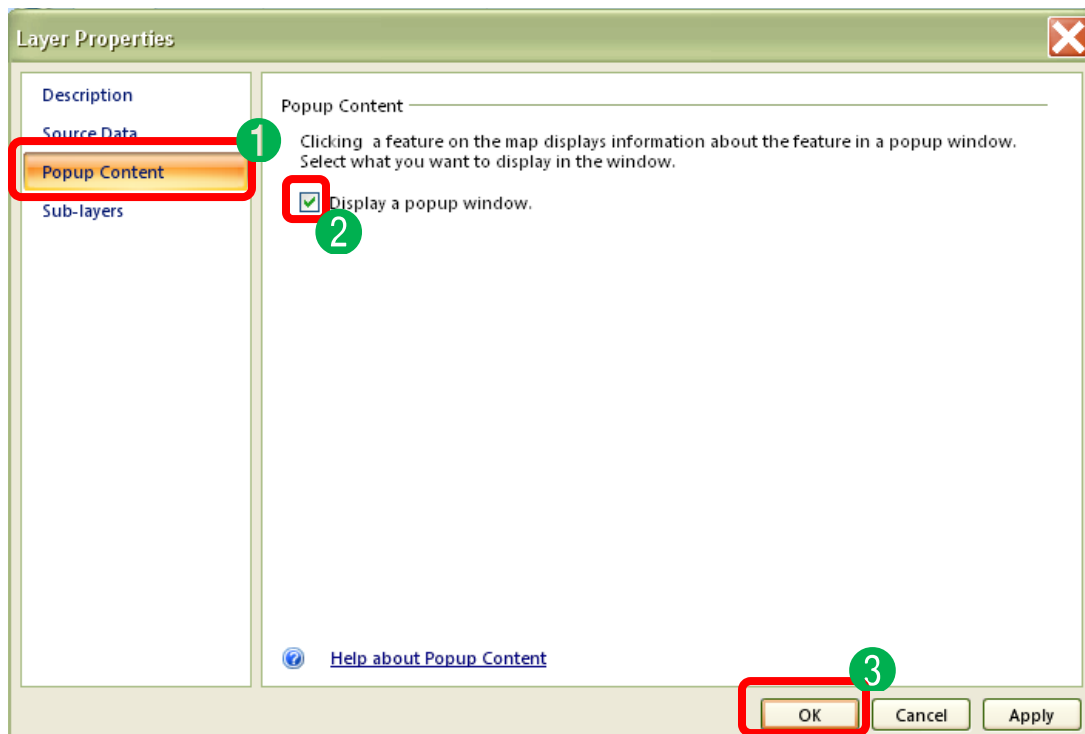
## B. Turn on Popup Content

Pop up content allows the user to select a point in the map and retrieve more information on it.

- 1) In the **Contents** panel, right click on the Map Service Name, **WestchesterCountyMap\_Light**.
- 2) Select **Properties...**



- 3) In the **Layer Properties**, select the **Popup Content** tab on the left hand side.
- 4) On the right hand side, check the box next to **Display a popup window**.
- 5) Select the **Ok** button.



## Questions??? Contacts below

Cynthia Marx at [llc4@westchestergov.com](mailto:llc4@westchestergov.com) or 914-995-3014

### ArcGIS Resources

ArcGIS Explorer Website

<http://resources.arcgis.com/content/arcgis-explorer>

ArcGIS Explorer Quick Start Tutorial Video

<http://www.youtube.com/watch?v=9gnWi4ZAvxw>

